



WHAT IS A GENERAL PLAN UPDATE?

General Plan Update



- A long-range planning document that identifies community’s priorities for how a city grows and is developed into the future.
- Sets goals for housing, land use, transportation, parks, safety, the environment, and infrastructure.
- Required by law to be adopted by California cities and counties.
- Must be comprehensive and reflect community values and priorities to shape a healthy, livable, and economically resilient city.

PROJECT SCHEDULE

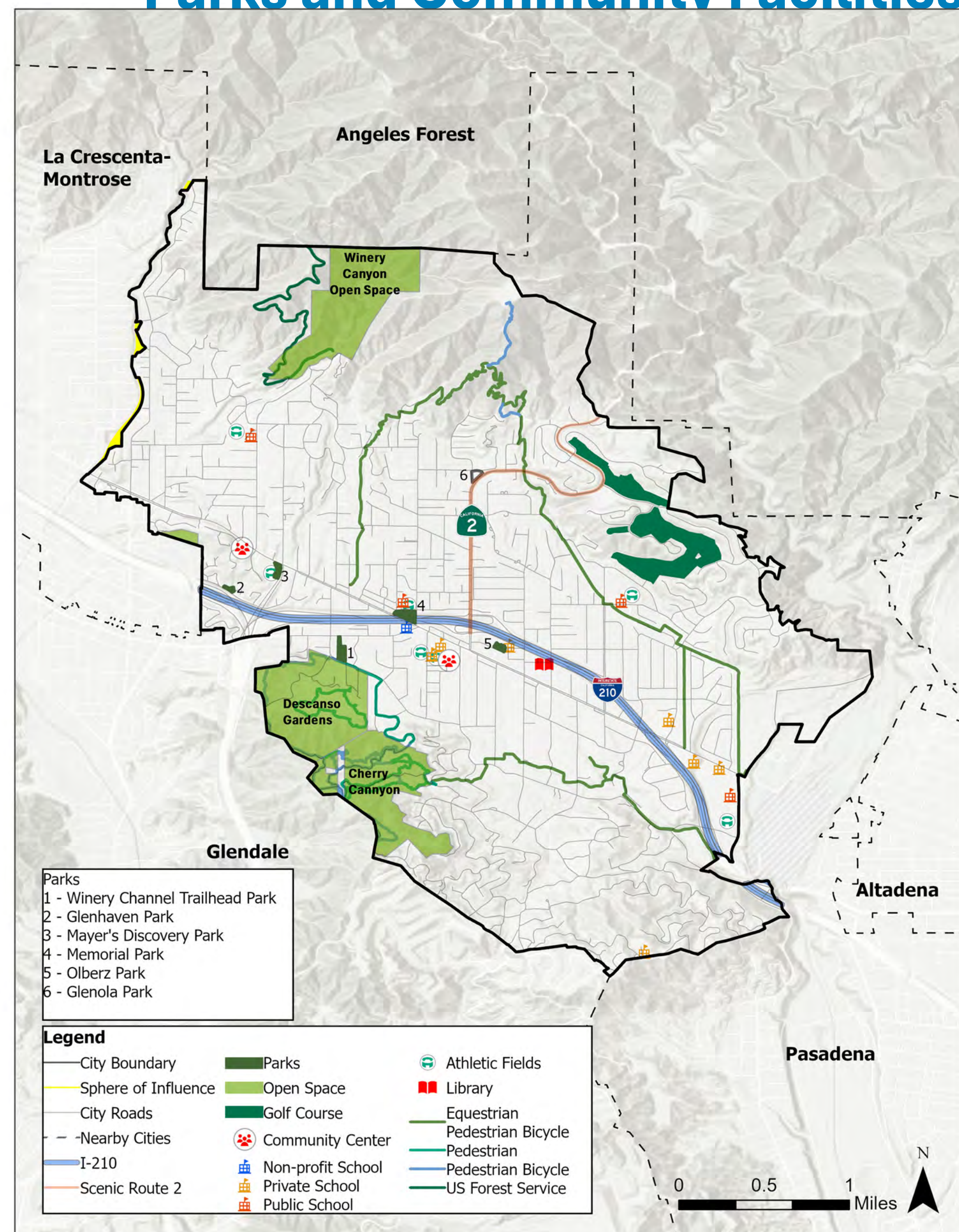




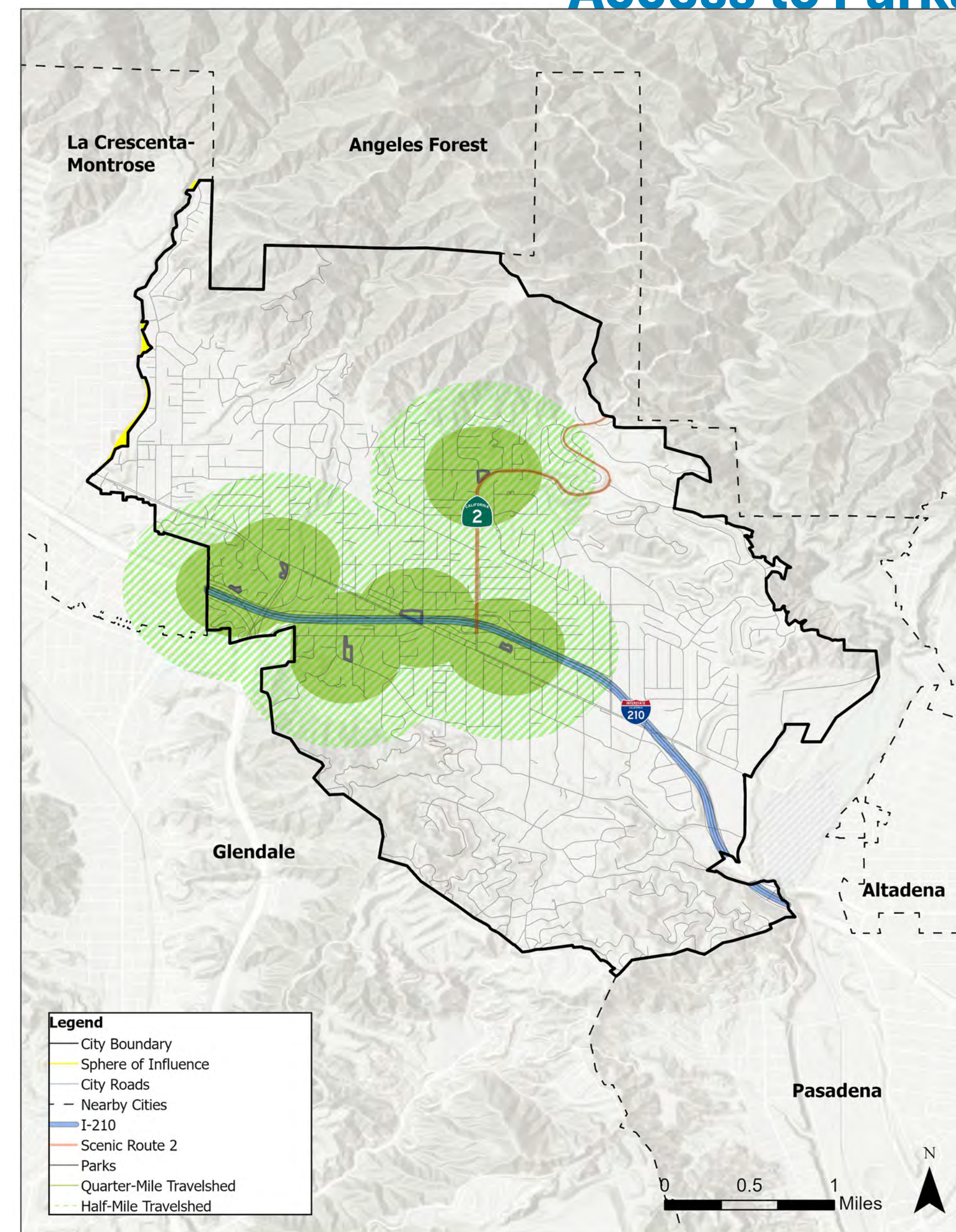
An Open Space & Recreation Element is a required chapter of a city's General Plan that focuses on providing and managing parks, trails, and recreational facilities in the City.

- Promotes safe, inclusive, and equitable access to parks and recreational opportunities.
- Guides investments that support community health, quality of life, and sustainability.
- Identifies opportunities and sets goals and policies for protecting resources and expanding parks and recreation in the City.
- Supports climate resiliency through urban greening, tree canopy, and natural resource protection.

Parks and Community Facilities

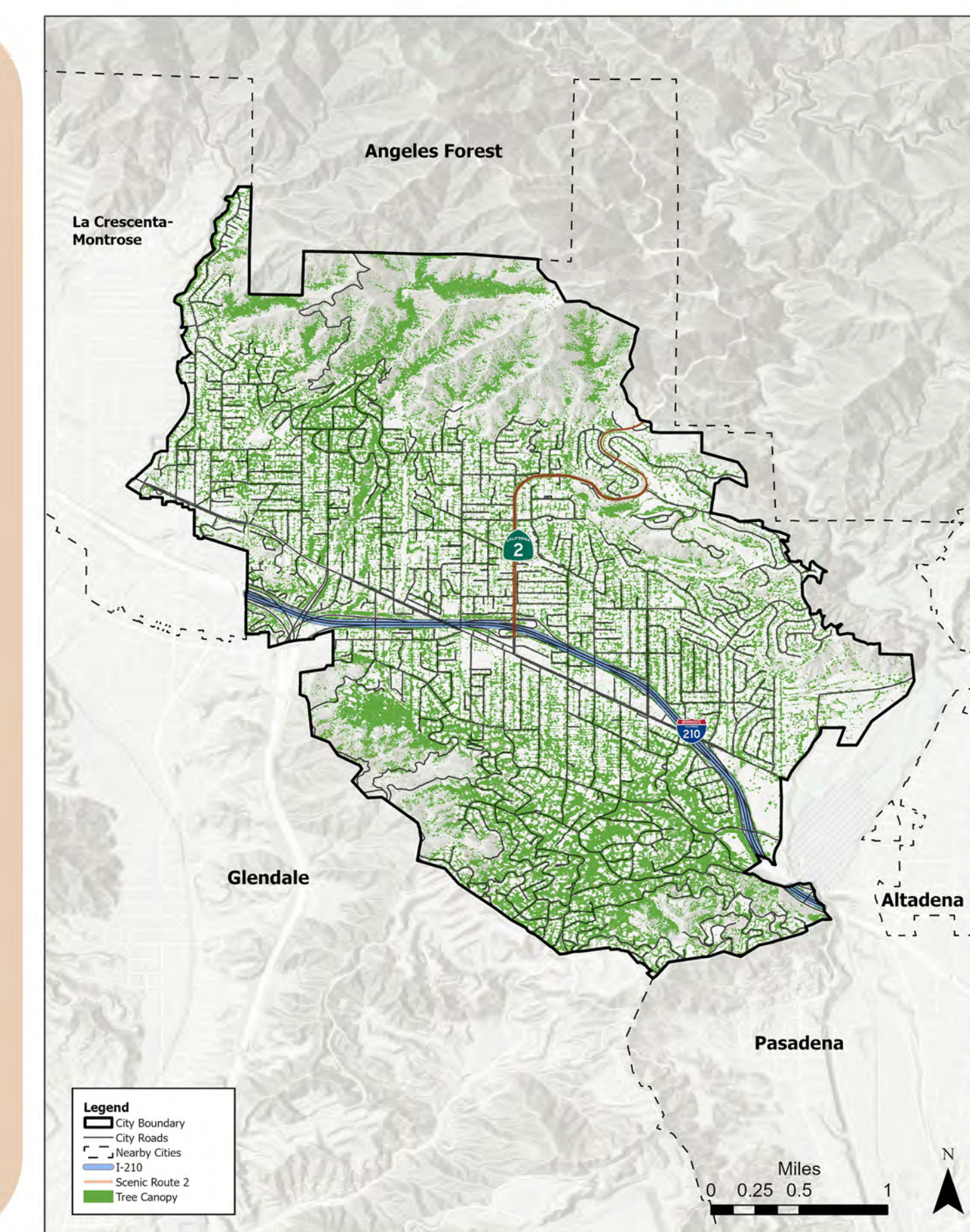


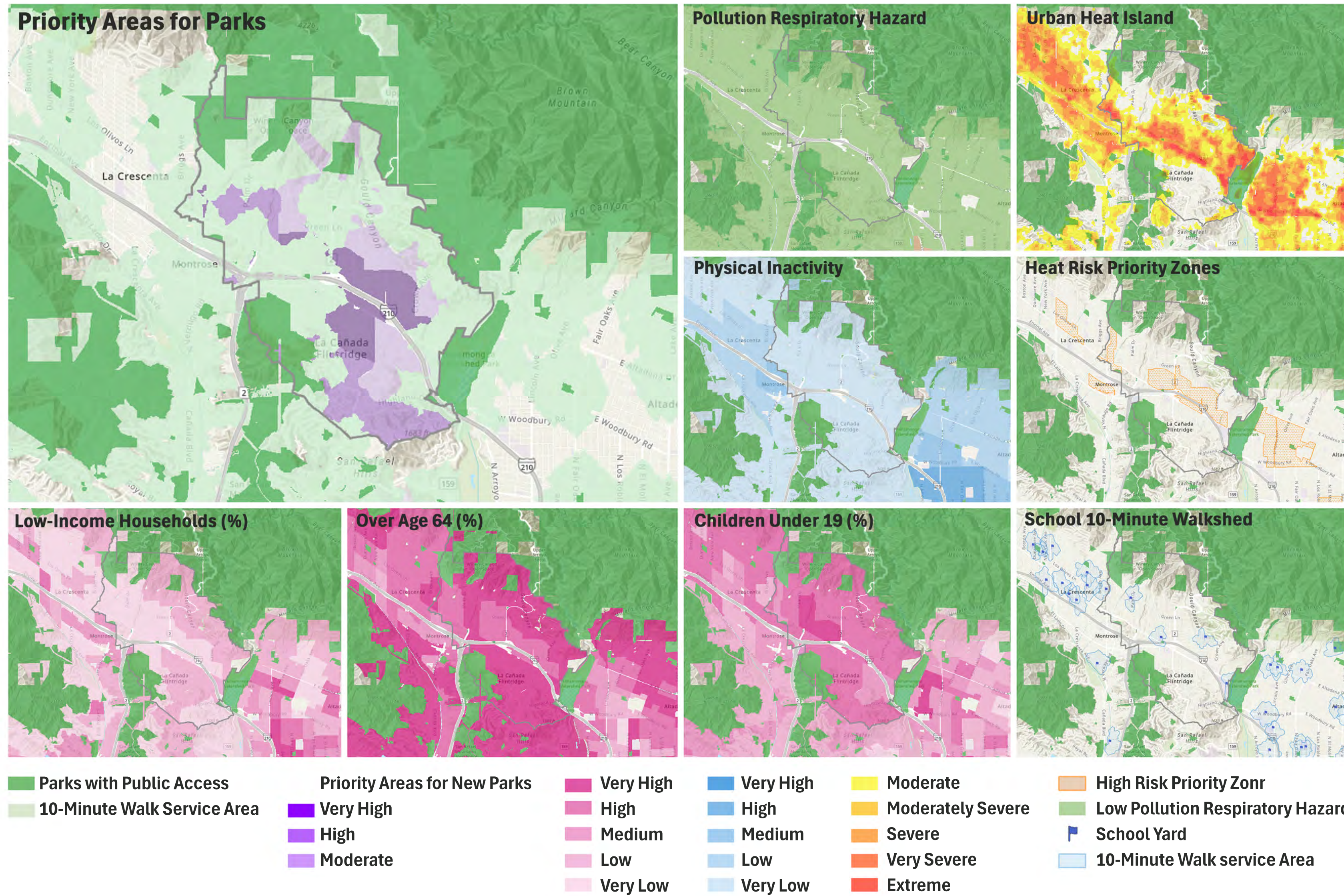
Access to Parks



A strong tree canopy provides shade, lowers temperatures, and reduces the urban heat island effect, making neighborhoods and access more comfortable. In California, where the average urban tree canopy is only about 14.5% compared to 36% in La Cañada Flintridge. However, larger percentage of Tree Canopy has to be balance with Wild Fire Safety.

Tree Canopy Coverage
36%





Focus on SB 1425

State law requires cities to update their Open Space Element to address equitable access, climate resilience, and ecological restoration (rewilding).

Key Updates for Open Space Element

- Provide equitable access to open space for all residents
- Highlight climate resilience and co-benefits of Open Spaces (cooling, heat island, flood control)
- Identify opportunities for rewilding and habitat restoration
- Coordinate with Land Use, Safety, and EJ Elements

Total Park Acreage- 6.75 Acres
Parks Space per 1,000 people- 0.33 Acres*

*Not including 870 acres open space covered by Winery Canyon Open Space, Descanso Gardens, Cherry Canyon, and Golf Course.

EXISTING CITY PARKS



Bike Score
25

Walk Score
34

Residents live within a 10-minute walk of a park
59%



A Conservation Element is a required chapter of a city's General Plan that focuses on the protection and sustainable management of natural resources.

- Identifies and manages water, energy, air quality, soils, minerals, and biological resources.
- Guides policies to protect sensitive habitats, wildlife corridors, and biodiversity.
- Addresses the balance between growth and resource protection, ensuring long-term environmental health.
- Supports climate resiliency by conserving open lands, reducing GHG emissions, and adapting to changing climate conditions.

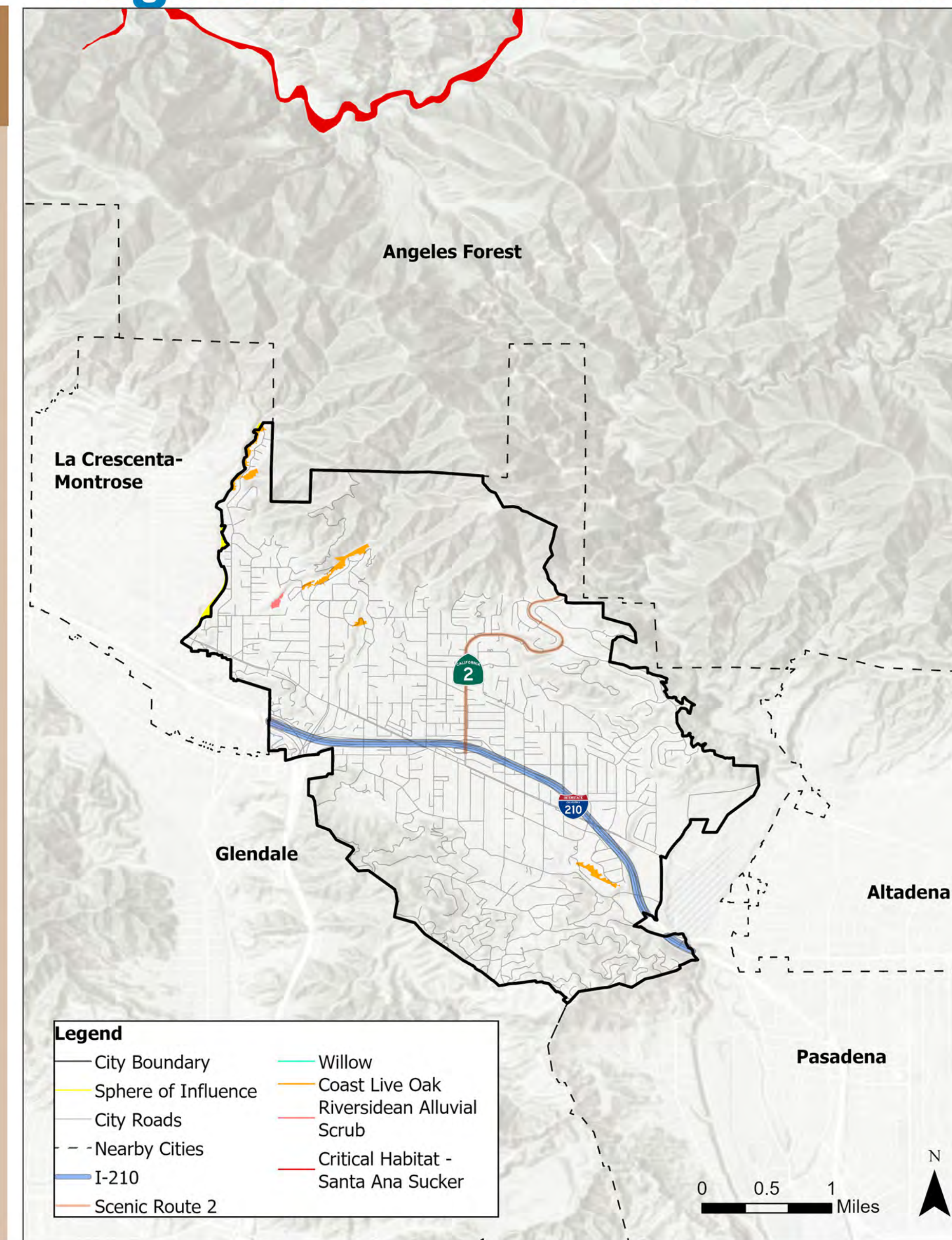
Focus on AB 1889

State law requires cities to update the Conservation Element to address habitat connectivity and wildlife movement across developed landscapes.

Key Updates for Conservation Element

- Identify and map wildlife corridors and connectivity
- Evaluate barriers to wildlife movement
- Include policies to avoid, minimize, or mitigate impacts
- Explore opportunities to restore degraded habitat
- Coordinate with Caltrans and regional conservation plans

Vegetation & Critical Habitat



Wildlife Connectivity



A Circulation Element is a required chapter of a city's General Plan and it establishes the framework for the community's transportation and mobility system.

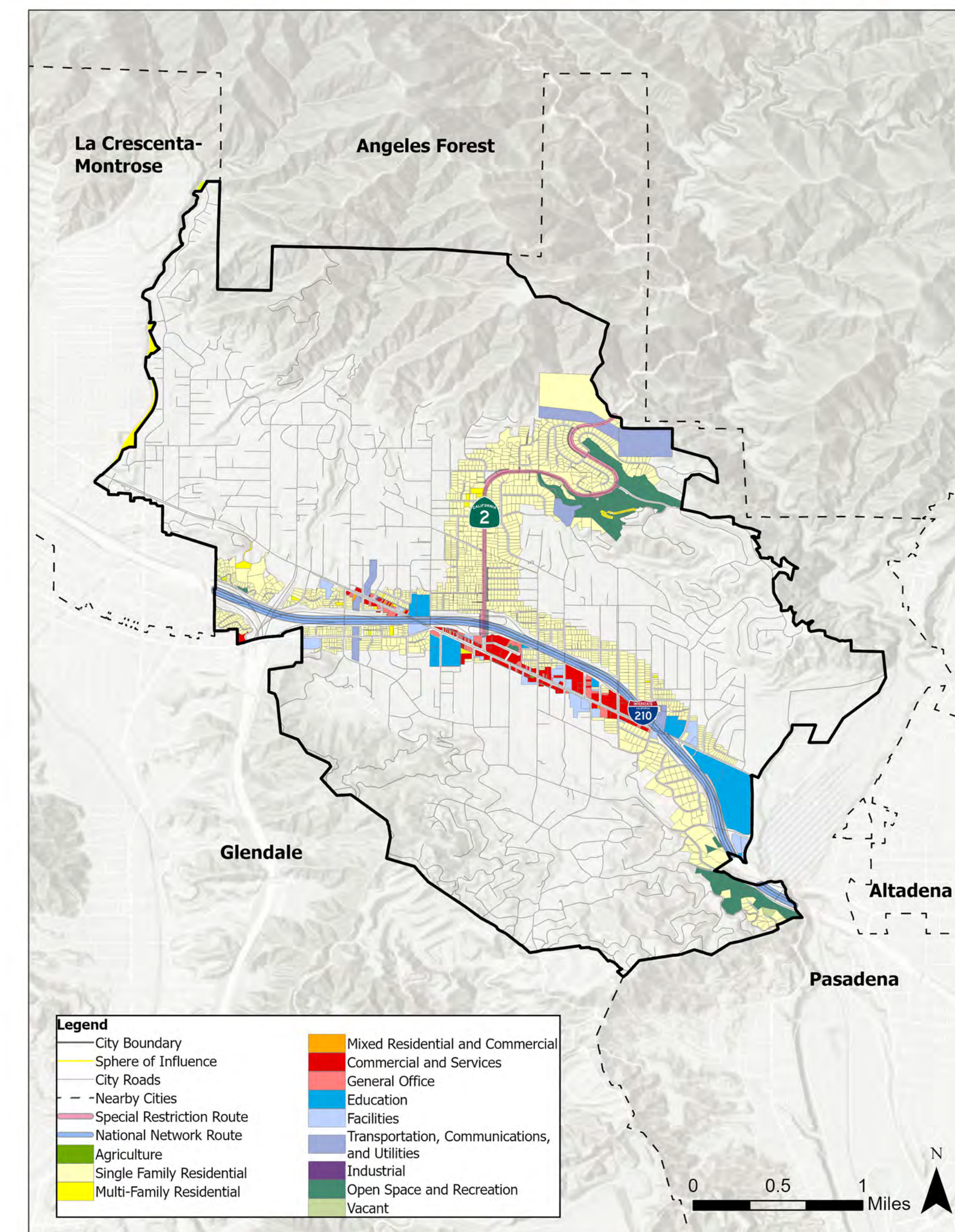
- **Addresses streets, transit, bicycle, pedestrian, vehicular, and goods movement networks.**
- **Guides how the transportation system supports land use patterns and economic activity.**
- **Promotes safe, efficient, and accessible travel for all users, including disadvantaged groups.**
- **Supports climate goals by reducing reliance on single-occupancy vehicles and encouraging sustainable travel choices.**

Focus on AB 98

State law requiring cities to identify truck routes in the Circulation Element to improve goods movement while reducing noise, safety, and air quality impacts near homes and sensitive uses.

Key Updates for Circulation Element

- **Designate and map truck routes**
- **Prioritize highways and arterials for truck movement**
- **Avoid residential and sensitive receptors**
- **Improve safety and reduce environmental impacts**
- **Coordinate with land use and air quality goals**



Truck Routes Vs. Sensitive Receptors

Which strategies would you most support to improve wildlife connectivity?



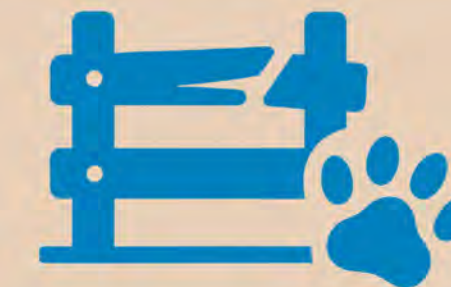
Wildlife crossings or underpasses at major roads



Limiting development in key wildlife corridors



Expanding native vegetation buffers



Reducing fencing barriers



Using easements to create corridors



Community education and volunteer habitat programs

The City has a large tree canopy that provides many benefits but also increases wildfire risk. Which strategies would you most support to balance tree canopy and wildfire risk?



Selective thinning or pruning to reduce hazards



Replacing existing planting with more fire-resistant native trees



Creating defensible space around homes



Incentives for residents to manage vegetation



Public education on safe landscaping

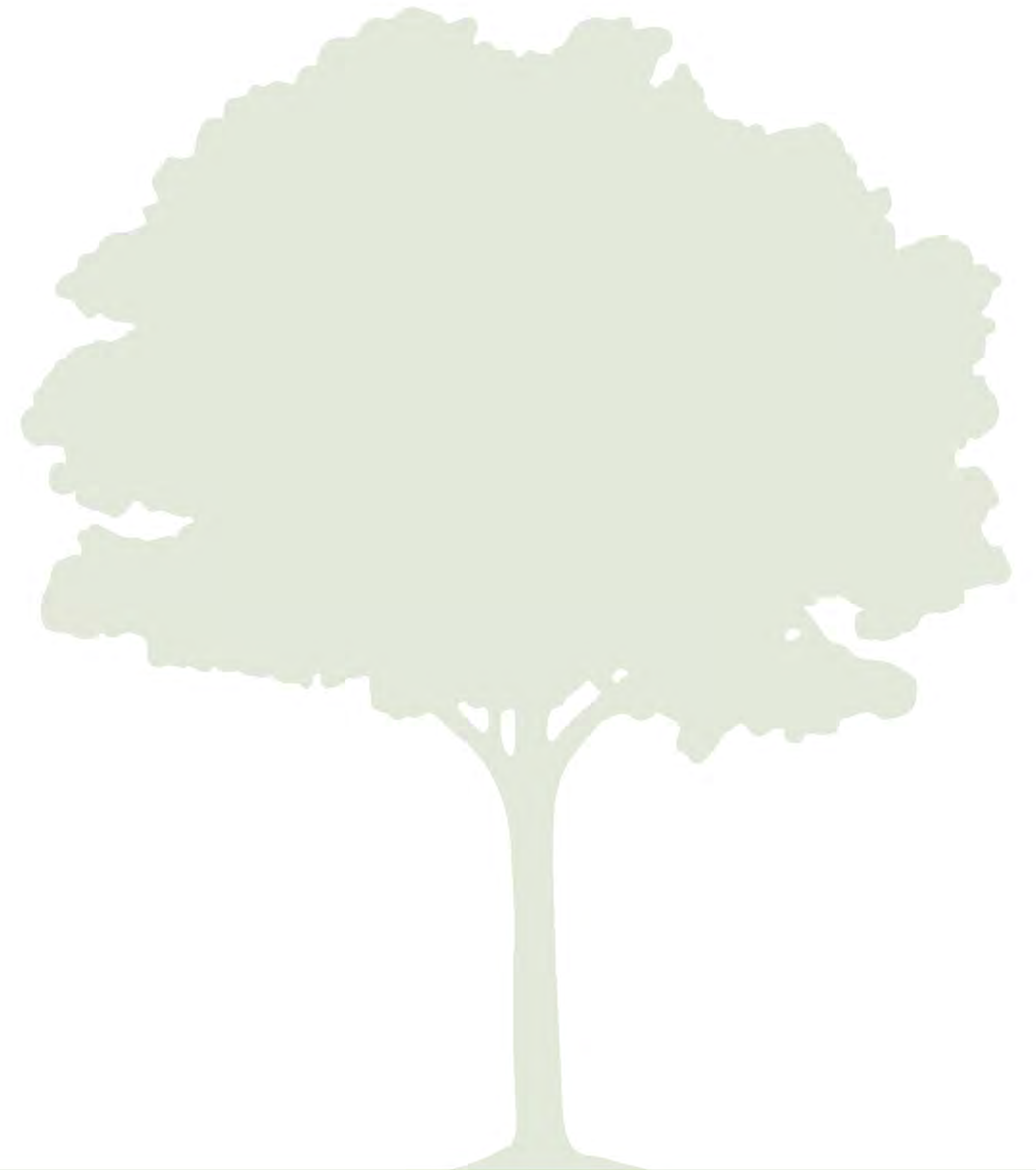


Promote Shared Responsibility Through Neighborhood Programs




Use post-its to provide ideas and strategies for the following:

- Enhance and expand open space, parks, and recreational facilities in the City.
- Protect natural resources and improve wildlife connectivity.



Use the materials provided here, mark the following on either of the two maps.

- **Mark your favorite parks, trails, and missing connections (e.g., where you wish there was shade or seating, where would you like to see recreational activities or trails).**
 - **Identify wildlife sightings, tree canopy gaps, or areas prone to flooding, erosion, or fire.**
 - **Focusing on truck movement through the City, mark trouble spots (cut-through truck traffic, truck idling areas).**
- 
- A large, stylized silhouette of a tree with a thick trunk and a full, rounded canopy, positioned on the right side of the slide.